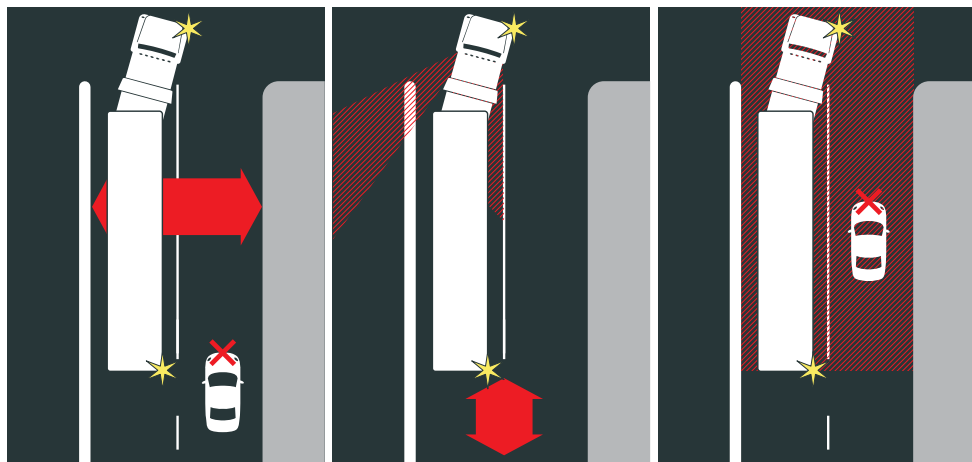


ALL ↑ WE NEED **SPACE** TO KEEP YOU SAFE

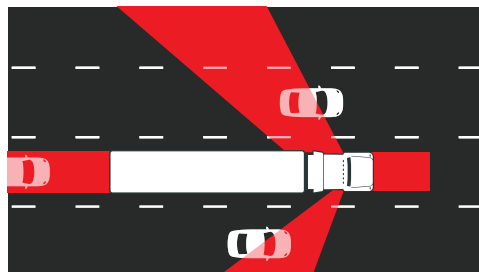
Why you shouldn't overtake a turning truck



Trucks and other vehicles over 7.5 metres long that have a DO NOT OVERTAKE TURNING VEHICLE sign on the back are legally allowed to take up more than once lane to turn at corners, intersections and roundabouts. They can even use a right turn only lane to turn left or a left turn only lane to turn right.

So, whether you're turning left, right or you're at a roundabout, don't drive past or overtake a turning truck unless you're absolutely sure it's safe to do so.

Learn where the blind spots are

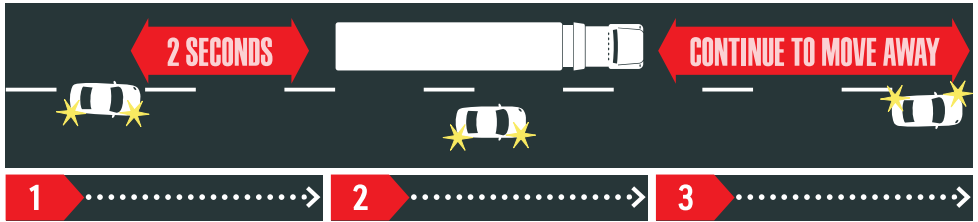


Trucks have four blind spots:

1. Immediately in front of the truck
2. Beside the driver's door
3. Directly behind the truck
4. On the passenger's side, from the door extending out across three lanes along the length of the truck.

If you have to drive through these areas to pass a truck, make sure you're far enough behind for the truck driver to see you, indicate early, and then pass as quickly as it's safe to do so without breaking the speed limit.

How to overtake a truck



Maintain a safe following distance

That's at least two seconds behind the truck; more if the weather's bad or it's dark. Staying this far back means you're more likely to see oncoming traffic and overtaking opportunities. Remember, some trucks are so long you may need as much as five kilometres to overtake them.

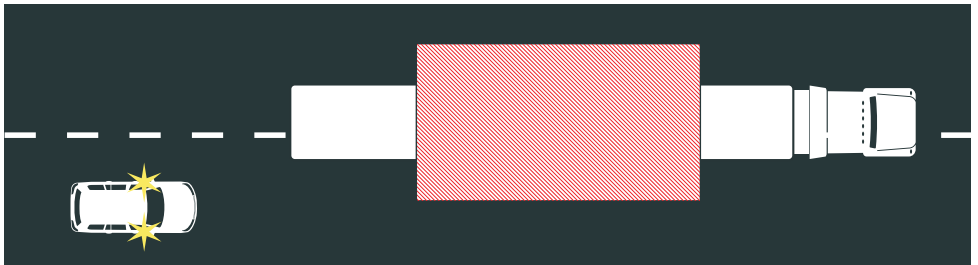
Don't linger by the truck

When it looks like it's safe to pass, start to close the gap, then indicate and pass as quickly as possible without breaking the speed limit. If you linger by the truck, you may be in their blind spot.

Don't cut in front of the truck

Maintain your speed and only pull back in when you can see both the truck's headlights in your rear-view mirror. Always allow plenty of time when you overtake, so you don't have to cut in suddenly, causing the truck to brake hard or swerve off the road.

Driving safely around oversized loads



No matter where you're driving in Australia, you may come across a truck with an oversized load. It may be an old house being moved to a new location, equipment for mines or construction projects, or giant turbines for a wind farm.

Oversize means more than 2.5 metres wide and they take up more than half the road. That's why they're often accompanied by pilot or escort vehicles. It can be a very long convoy, stretching kilometres.



#weallneedspace

For more tips on how to drive safely around trucks,
visit www.weneedspace.com.au

