

# Information sheet - Victoria Class 1 4-axle & 5-axle All Terrain Mobile Crane Mass and Dimension Exemption Notice

## Purpose

The purpose of the Victoria Class 1 4-Axle & 5-Axle All Terrain Mobile Crane Mass and Dimension Exemption Notice (the Notice) is to exempt certain all terrain cranes from the mass and dimension requirements in the Heavy Vehicle (Mass, Dimension and Loading) National Regulation (MDL).

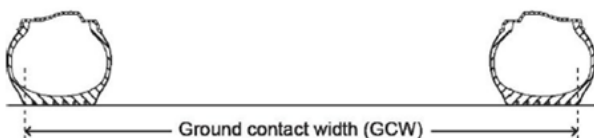
## Definitions

**All terrain mobile crane** means a Special Purpose Vehicle (SPV) that has all of the following features and requirements:

- (a) is a mobile crane with either 4 axles or 5 axles; and
- (b) has two tyres per axle; and
- (c) has at least 50% of its axles steerable; and
- (d) is not a truck-mounted SPV; and
- (e) has on-road and off-road capability; and
- (f) has separate driving and crane-operating compartments.

**Ground contact width (GCW)** means:

- (a) in relation to an axle, the distance between the outermost point of ground (a) contact of the outside tyres on each end of the axle; or
- (b) in relation to an axle group, the greatest GCW of all the axles (b) in the group.



## Mass and dimension requirements

The tables in this section summarise the minimum axle spacings, GCW and axle mass limits for eligible vehicles.

### 4-axle all terrain mobile cranes



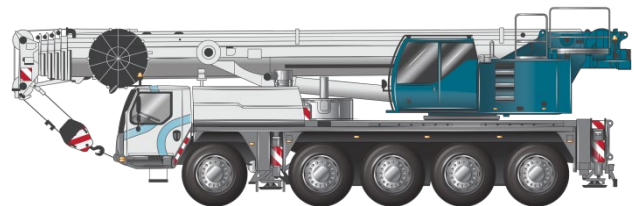
**Table 1: Minimum axle spacing for a 4-axle all terrain mobile crane**

GVM (t)	Minimum axle spacing (mm)			
	Axle 1-4	Axle 1-2	Axle 2-3	Axle 3-4
42.0	5,300	1,650	2,000	1,650
44.0				
45.0				
46.0				
47.0				
48.0				

**Table 2: Axle mass limits and GCW for a 4-axle all terrain mobile crane**

GVM (t)	Minimum GCW (mm)	Maximum mass limit per axle (t)
42.0	2,470	12.0
44.0	2,510	
45.0	2,550	
46.0	2,590	
47.0	2,630	
48.0	2,670	

### 5-axle all terrain cranes



**Table 3: Minimum axle spacing for a 5-axle all terrain mobile crane**

GVM (t)	Minimum axle spacing (mm)				
	Axle 1-5	Axle 1-2	Axle 2-3	Axle 3-4	Axle 4-5
50.0	7,250	2,450	1,600	1,600	1,600
54.0	7,750	2,450	1,650	2,000	1,650
56.0					
57.0					
58.0	7,750	2,450	1,650	2,000	1,650
59.0					
60.0					

**Table 4: Axle mass limits and GCW for a 5-axle all terrain mobile crane**

GVM (t)	Minimum GCW (mm)	Maximum mass limit per axle (t)
50.0	2,750	10.0
54.0	2,670	12.0
56.0	2,720	
57.0	2,770	
58.0	2,820	
59.0	2,870	
60.0	2,920	

### Dimension limits

Eligible vehicles must comply with the general dimension requirements in Table 5.

**Table 5: Dimension limits**

Dimension	Limit
Overall length	16.5m
Rear overhang	Lesser of 4.0m and 90% of the wheelbase
Width	3.5m
Projection in front of the centre of the steering wheel	3.5m
Height	4.3m

### Operating conditions

- An eligible vehicle must also comply with the conditions in **Schedule 8 - Conditions of mass or dimension exemptions applying to Class 1 heavy vehicles** of the MDL.
- The section width of each tyre on an eligible vehicle must be at least 445mm.
- If an eligible vehicle has the centre of a steering control to the left of the vehicle, it must:
  - display a **'left hand drive'** sign that complies with section 31 of Schedule 2 to the *Heavy Vehicle (Vehicle Standards) National Regulation* on the rear of the vehicle; and
  - either:
    - be fitted with a closed circuit television system that provides the driver with an adequate view to the right rear quarter of the vehicle; or
    - be accompanied by a pilot vehicle.

### Route restrictions

- Travel over timber deck bridges on an approved route(s) is not permitted.
- An eligible vehicle that has a maximum speed capability of 60km/h or less may not be used on any freeway or tollway on the approved routes.
- An eligible vehicle that has a maximum speed capability greater than 60km/h may use all the freeways and tollways on the approved routes.
- The maximum speed capability of a crane is the maximum speed the crane can reach on a horizontal surface, as determined by the crane manufacturer.

### Route conditions

- An eligible vehicle may not use the approved routes more than twice per day, being once on the inbound journey and once on the outbound journey.
- Where practical and safe to do so, an eligible vehicle must avoid being on a bridge at the same time as a B-double, a Class 1 heavy vehicle or a Class 3 heavy vehicle.
- If an eligible vehicle is wider than 3.0m, before attempting to cross a tramway track, the driver or operator of the vehicle must first obtain permission from the [Department of Transport and Planning Over Dimensional Team](#). (Tel: 0417 054 626) or email [odlpermit@transport.vic.gov.au](mailto:odlpermit@transport.vic.gov.au).

### Approved route

Eligible vehicles are authorised to operate on the 'Victoria's 4 & 5-Axle All Terrain Mobile Cranes' published on the NHVR National Network Map.

#### Note:

- Operators must comply with additional conditions on approved and restricted routes on the maps.
- If travel is required on a route other than a route permitted under this Notice, a mass or dimension exemption (permit) must be obtained from the NHVR for travel on that route.
- An eligible vehicle operating under this Notice must be an intelligent access program vehicle enrolled in and monitored by one of the following approved intelligent transport systems:
  - Intelligent Access Conditions (IAP)
  - Telematics Monitoring Application (TMA).

#### For more information:

Visit: [www.nhvr.gov.au](http://www.nhvr.gov.au)  
 Subscribe: [www.nhvr.gov.au/subscribe](http://www.nhvr.gov.au/subscribe)  
 Email: [info@nhvr.gov.au](mailto:info@nhvr.gov.au)  
 Phone: 13 NHVR (13 64 87)\*

\*Standard 13 call charges apply. Please check with your phone provider. This information in this document is only a guide and should not be relied upon as legal advice. © Copyright National Heavy Vehicle Regulator 2026, <https://creativecommons.org/licenses/by/4.0/>